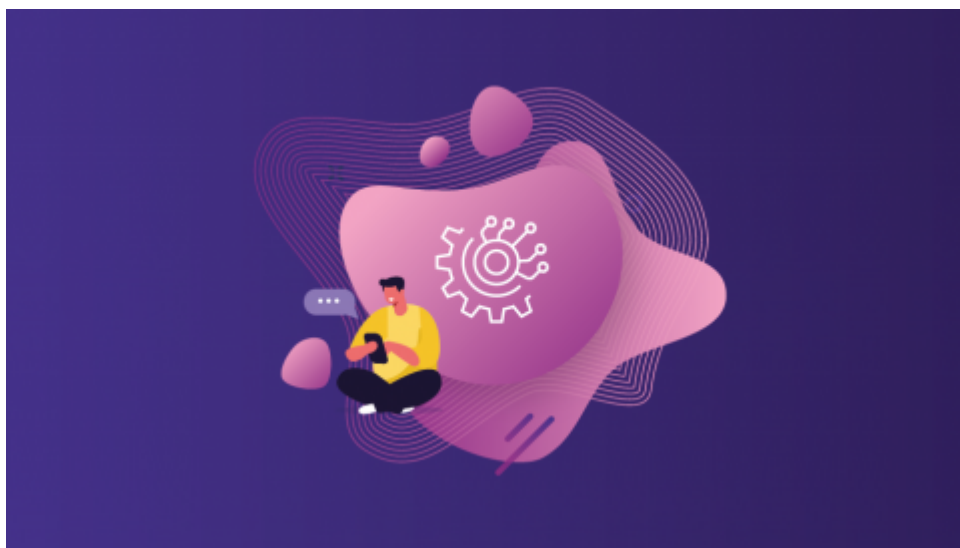


## Artificial intelligence in the DIGITAL Europe programme

The DIGITAL Europe programme will open up the use of artificial intelligence by businesses and public administrations. As data fuels the development of AI, DIGITAL also aims to set up true European data space and facilitate safe access to and storage of large datasets and trustworthy and energy-efficient cloud infrastructure.



DIGITAL will strengthen and support existing artificial intelligence testing and experimentation facilities in areas such as health and mobility in the Member States and encourage their cooperation.

## Related Content

### Big Picture

[The Digital Europe Programme](#)

The Digital Europe Programme (DIGITAL) is a new EU funding programme focused on bringing digital technology to businesses, citizens and public administrations.

### See Also

[How to get funding under the Digital Europe programme](#)

Learn about the work programmes, the calls for proposals and the application process for the Digital Europe Programme.

## Skills in the DIGITAL Europe programme

The DIGITAL Europe programme will fund the design and delivery of specialised programmes and traineeships for future experts in key capacity areas like data and AI, cybersecurity, quantum and HPC.

### Cybersecurity in the DIGITAL Europe programme

In the area of cybersecurity, one of the goals of the DIGITAL Europe programme is to strengthen cybersecurity coordination between Member States' tools and data infrastructures.

### Supercomputing in the DIGITAL Europe programme

The DIGITAL Europe programme aims to build up and strengthen the EU's supercomputing and data processing capacities, helping us to reach exascale supercomputing – computing with a power comparable to aggregating the computing capabilities of the mobile phones of the EU's entire...

### European Digital Innovation Hubs

European Digital Innovation Hubs (EDIHs) will function as one-stop shops that help companies dynamically respond to the digital challenges and become more competitive.

## More on Artificial intelligence

# A European approach to Artificial intelligence

The European Commission's approach to AI centres on excellence and trust. It aims to boost research...

---

**Source URL:** <https://digital-strategy.ec.europa.eu/activities/artificial-intelligence-digital-programme>